



**LIVING  
LEGACY  
FOUNDATION**

**Youth Education Program**

# **Educator Resource Guide**

**dedicated to saving lives  
through organ and tissue donation awareness**

Molly Schoeb  
Education Program Manager

[molly.schoeb@livinglegacyfoundation.org](mailto:molly.schoeb@livinglegacyfoundation.org)  
[www.livinglegacyfoundation.org](http://www.livinglegacyfoundation.org)

Toll-Free	(877) 275-5269
Main	(425) 201-6617
Fax	(425) 688-7641

## Table of Contents

Organization Introduction	Page 3
Student Education Program Opportunities	Page 4
Program Request Fax Form	Page 5
Fast Facts	Page 6
Frequently Asked Questions	Page 7-10
Understanding Brain Death	Page 11
Donation Resources	Page 12
Online Resources	Page 13
Organ Donation Diagram	Page 14
Organ Information	Page 15
Tissue Donation Diagram	Page 16
Tissue Information	Page 17
Review Worksheet Answer Guide	Page 18
Recommended Lesson Plan	Page 19
Crossword Puzzle	Page 20
Crossword Puzzle Answer Key	Page 21

Second Edition, October 2007

## Organization Introduction

### **LifeCenter Northwest Organ Donation Network**

LifeCenter Northwest Organ Donation Network is a federally designated nonprofit organ procurement organization (OPO). LifeCenter saves lives by **facilitating the recovery, preservation and allocation of organs** in its donor service area of Washington, Alaska, Montana and North Idaho. LifeCenter's team of healthcare professionals is under the leadership of Diana Clark, President and Chief Executive Officer and Member of the LifeCenter Board of Directors.

### **Living Legacy Foundation**

The Living Legacy Foundation was established by LifeCenter Northwest Organ Donation Network as a 501(c)3 nonprofit organization to serve as a bridge among donor families, recipients, living donors and our community, helping celebrate those who have given the gift of life through organ donation. We **fund education and outreach, increase the number of registered organ donors and eliminate barriers to donation.**

The Living Legacy Foundation's Youth Education Program introduces students to the importance of organ and tissue donation. By focusing on junior high and high school students, we provide them with the facts needed to make an informed decision when asked "Do you want to designate organ and tissue donor on your license?"

### **Living Legacy Registry**

Washington, Montana, Alaska and Idaho have all recognized their citizen's legal right to make their own decision to be an organ and tissue donor. In Washington and Montana, the information is stored in the Living Legacy Registry, **a confidential database of donation wishes** that can be assessed only by donation personnel, to be carried out at the time of death without needing further consent by family members. In Idaho, the information is stored in the Yes Idaho Registry. In Alaska, the information is stored in the Alaska Donor Registry. The driver licensing organizations in all four states will continue to ask citizens about their organ and tissue donation wishes when they apply for or renew their driver's license. This information is added to the registries on a daily basis.

[www.donatelifetoday.com](http://www.donatelifetoday.com)

## Youth Education Program Opportunities

- **Service Learning Projects**
- **Community Service**
- **In-Class Presentations**

The Living Legacy Foundation Youth Education Program was created as a community resource for young people to learn more about organ and tissue donation. Working with local schools, we provide opportunities for students to complete **service learning projects and community service requirements** focused on increasing organ and tissue donation awareness. Young adults will be able to make an informed decision on registering as an organ and tissue donor as a result of this presentation.



Living Legacy Foundation offers **in-class informational presentations** where students can learn the facts, ask questions, and hear personal stories of individuals whose lives were directly impacted by donation and transplantation.

To find out more about how you can use this important resource in your school, please contact our Education Program Manager at (425) 201-6617, toll free outside of the Seattle area at (877) 275-5269, or via e-mail at [molly.schoeb@livinglegacyfoundation.org](mailto:molly.schoeb@livinglegacyfoundation.org).

# Organ and Tissue Donation Program Request Form

***Yes! I am interested in an educational presentation on organ and tissue donation by Living Legacy Foundation.***

**1. Let us know your interest and which dates are best for you.**

I am interested in scheduling a presentation on:

1st Choice Date: \_\_\_\_\_ Periods/time \_\_\_\_\_ through \_\_\_\_\_

2nd Choice Date: \_\_\_\_\_ Periods/time \_\_\_\_\_ through \_\_\_\_\_

**2. Please provide the following information so I can contact you:**

Name: \_\_\_\_\_

School: \_\_\_\_\_

Address: \_\_\_\_\_

City: \_\_\_\_\_ State: \_\_\_\_\_ Zip: \_\_\_\_\_

Phone: \_\_\_\_\_

Best time to reach you via phone: \_\_\_\_\_

Email: \_\_\_\_\_

**3. Please fax this form to (425) 688-7641, attn: Molly Schoeb. You can also call (425) 201-6617, or toll free outside of Seattle at (877) 275-5269 or send an email containing the information above to [molly.schoeb@livinglegacyfoundation.org](mailto:molly.schoeb@livinglegacyfoundation.org).**

**Please give copies of this form to colleagues who might want to bring important information to their students/schools. *Thank you!***

## Fast Facts

- Anyone can be a potential donor regardless of age, race, or medical history.
- All major religions in the United States support organ, eye and tissue donation and see it as the final act of love and generosity toward others.
- If you are sick or injured and admitted to the hospital, the number one priority is to save your life. Organ, eye and tissue donation can only be considered after you are deceased.
- When you are on the waiting list for an organ, what really counts is the severity of your illness, time spent waiting, blood type, and other important medical information, not your financial status or celebrity status.
- An open casket funeral is possible for organ, eye and tissue donors. Through the entire donation process the body is treated with care, respect and dignity.
- There is no cost to the donor or their family for organ, eye or tissue donation.
- **One organ, eye and tissue donor can save or enhance the lives of over 50 people.**

# Frequently Asked Questions

## **Does organ and tissue donation really help people?**

- Organ transplants are life-saving operations. People on the transplant waiting list are dying of conditions like heart failure and kidney disease, and most will die without the help of a generous organ donor.
- Tissue transplants are life-saving and life-enhancing operations. Tissue transplants save the lives of recovering burn victims, help blind people see and help people walk again.
- Post-transplant, organ and tissue recipients can live healthy, active lives that weren't possible when they were ill. Most recipients make such an amazing recovery, you wouldn't know they'd received a transplant unless they told you.

## **Who can be an organ and tissue donor?**

- Anyone, regardless of age, sex, race or medical history can be considered for organ and tissue donation.
- Decisions about medical suitability for organ and tissue donation are made, at the time of death, by professionally trained and experienced medical professionals.
- Everyone, regardless of age or medical history, is encouraged to register as a donor.

## **How do I become an organ and tissue donor?**

### *How to become an organ and tissue donor in Washington and Montana*

- Register online at [www.donatelifetoday.com](http://www.donatelifetoday.com)
- Call toll-free at (877) 275-5269 and request a brochure to fill out and return.
- Say 'yes' to organ and tissue donation when applying for or renewing your driver's license. Residents who already have a heart or the word DONOR on their driver's license are automatically added to the Living Legacy Registry.

### *How to become an organ and tissue donor in Alaska*

- Register online at [www.alaskadonorregistry.org](http://www.alaskadonorregistry.org)
- Call toll-free at (800) 719-LIFE and request a brochure to fill out and return.
- Say 'yes' to organ and tissue donation when applying for or renewing your driver's license. Residents who already have a heart on their driver's license are automatically added to the Alaska Donor Registry.

### *How to become an organ and tissue donor in Idaho*

- Register online at [www.yesidaho.org](http://www.yesidaho.org)
- Call toll-free at (866) 937-4324
- Say 'yes' to organ and tissue donation when applying for or renewing your driver's license. Residents who already have the word DONOR on their driver's license are automatically added to the Idaho Donor Registry.

## **What organs and tissues can be donated?**

- Organs: heart, kidneys, pancreas, lungs, liver, and small intestine.
- Tissues: corneas, bone, blood vessels, veins, nerves, heart valves, skin, tendons and ligaments.
- Please see the Donation Resources page for specific information on blood donations.

### **Can I set limitations on the organs and tissues I would like to donate, or direct donation to a friend in need?**

- Saying yes to organ and tissue donation on your driver's license indicates your consent for all organs and tissues, for transplant and research.
- If you'd like to set limits, such as ruling out specific organs or tissues, indicating transplant or research, or directing an organ to a specific person, request a brochure or register online.

### **What if I change my mind?**

- Your most recent access to the registry, whether it be via your driver's license, sending in a brochure, or accessing the registry online, will be the information maintained in the registry.
- If you alter your record or decide to remove yourself, that will override any past information.
- To remove yourself from the registry, call the specific state registry number and request removal.

### **Where does organ and tissue donation happen?**

- Organ donations occur at the medical facility where the potential donor was identified, *after* death has been declared by the patient's physician. It is then determined whether the individual is a registered donor. If not, consent must be obtained from next of kin to continue with the donation process.
- Tissue donation can occur at the medical facility or another suitable recovery location.
- LifeCenter Northwest works with over 190 hospitals throughout Washington, Montana, Alaska and North Idaho – to ensure everyone has the opportunity to donate.

### **Does the donor's family incur the cost of donation?**

- There is *no cost* to the donor's family for organ and tissue donation.
- *All costs related to donation are paid by the organ and tissue procurement organizations.*
- Other hospital and funeral home expenses unrelated to donation remain the responsibility of the donor's family.

### **What if an individual registered to be a donor, but family is opposed to donation?**

- State and federal laws support the donor's rights.
- If an individual has recorded their personal donation decision, it *must* be honored, whether or not the next of kin agree with the donation decision.
- Information about their loved one's decision will be conveyed to the family members and they will be supported throughout the donation process.
- Making sure your family is already aware of your donation decision helps prevent further stress during their time of loss.

### **Can the donor family meet the recipient(s)?**

- Organ and tissue donation is a confidential process. No pressure is placed on donor families or transplant recipients to meet or make contact with one another.
- Shortly after donation, the donor family and recipient(s) will receive general information about one another (age, sex, occupation, general location). No identifying details are shared unless consent has been given by both parties.
- LifeCenter Northwest can arrange first-person contact for families of donation if the desire is mutual.

### **How is the organ and tissue allocation process determined?**

- There is no allocation process for tissue; however, every effort is made to offer tissue in our region first.
- More than 85% of all tissues recovered are processed and provided back to patients in our region.
- If someone needs an organ transplant, their name is added to the National Transplant Waiting List.
- United Network of Organ Sharing (UNOS), the organization that manages the list, works with LifeCenter coordinators to match available organs to recipients in need.
- Organs are offered to patients by considering such factors as medical urgency, tissue type, length of time on the waiting list, blood type, and body size.
- Location is also considered in placement. Organs are offered in LifeCenter's service area first (Washington, Montana, Alaska and Idaho). If a suitable match is not found, the organs are offered regionally, then nationally.
- *There is no discrimination due to age, sex, race, occupation or social and/or financial status when determining who receives an organ.*

### **Where do organ transplants happen?**

- Transplants occur only at hospitals that specialize in transplant surgery.
- In this region, there are five transplant centers, each with different transplant programs:
  - Children's Hospital and Regional Medical Center – heart, liver, kidney, intestine
  - Sacred Heart Medical Center – heart, kidney
  - Swedish Medical Center – kidney, pancreas
  - University of Washington Medical Center – heart, lungs, liver, kidney, pancreas, intestine
  - Virginia Mason Medical Center – kidney, pancreas

### **Will doctors still try hard to save a patient whom they know is an organ and tissue donor?**

- There is no conflict between saving lives and using organs and tissues for transplantation.
- The doctors who work to save your life are different than those involved in organ and tissue recovery and transplantation.
- It is only after every attempt has been made to save your life – and after death has been declared – that LifeCenter Northwest begins the organ donation process.

### **Will donation affect an open casket funeral?**

- Organ and tissue donation is a delicate surgery and does not disfigure the body.
- An open casket funeral is still possible.
- A LifeCenter coordinator will address specific funeral-related questions with each family before donation occurs.

### **Can organs be given to different racial groups or individuals of the opposite sex?**

- Gender does not influence the allocation of donated organs.
- Although genetics does influence donation, and the shared genetic structure of families can allow for a better match, race tends to be a small factor in donation.
- Cross-racial and cross-gender donations are very successful.

### **Are organs bought and sold on the black market?**

- According to the Uniform Anatomical Gift Act of 1984, human organs cannot be bought or sold in the United States. Violators are subject to large fines and imprisonment.
- Organs are distributed according to national policy established and monitored by United Network for Organ Sharing (UNOS).
- “Black market” sale is impossible because recovered organs must be rigorously tested to be appropriately matched to a fitting recipient.

### **Are there religious objections to donation?**

- All major religions support organ donation as a humanitarian act of giving. Transplantation is consistent with the life-preserving traditions of these faiths. For more details regarding specific religious beliefs on donation, visit [www.livinglegacyfoundation.org/learn/religious](http://www.livinglegacyfoundation.org/learn/religious).
- Individuals are encouraged to consult their spiritual advisor with specific questions.

### **How can I become a living kidney donor?**

- A living kidney donor is someone who donates one kidney from their own living body. A living kidney donor’s remaining kidney will do the work of two kidneys, while their donated kidney will do the same inside the transplant recipient.
- If you know someone who needs a living donation, you should contact that person’s transplant center.
- If you do not have a specific patient in mind, you can contact any of the transplant centers in our region for more information on their anonymous living kidney programs:

*University of Washington Medical Center*  
(206) 598-3627

*Swedish Medical Center*  
(800) 996-7426

*Sacred Heart Medical Center*  
(509) 474-4500

*Virginia Mason Medical Center*  
(800) 354-9527 ext. 10925

### **Are living kidney donations successful?**

- Living kidney donor transplants can provide recipients with an excellent quality of life for years.
- Completely matched sibling transplants often function well even after 25 years.
- With living donations, transplant recipients may feel better prepared because the transplant is a scheduled surgery.

### **How can I become a whole body donor?**

- Whole body donation is not a program at LifeCenter Northwest, Life Alaska Donor Services, Northwest Tissue Services, SightLife or the Living Legacy Foundation, and is not compatible with organ and tissue donation.
- Please see page 12, Donation Resources, for specific state information on whole body donation.

# Understanding Brain Death

What is brain death?

- The complete and irreversible loss of brain and brain stem function
- An established medical and legal definition of death
- Brain death is death
- When brain death has been declared, families can be given the option of organ and tissue donation, if the patient has the medical potential to be a donor.



The above image shows the blood flow inside a normal, active brain. When someone severely injures their brain, the blood flow is cut off or restricted by pressure from the swelling brain. Brain death occurs when the blood flow to the brain is entirely lost. The photo below is of a brain dead brain.



Images courtesy of Gift of a Lifetime  
[www.organtransplants.org](http://www.organtransplants.org)

# Donation Resources

## ORGAN DONATION

**LifeCenter Northwest  
Living Legacy Foundation**  
Serving WA, AK, MT,  
North ID  
11245 SE 6th St. Suite 100  
Bellevue, WA 98004  
(877) 275-5269  
[www.lifecenternorthwest.org](http://www.lifecenternorthwest.org)  
[www.donatelifetoday.com](http://www.donatelifetoday.com)  
[www.eldondevida.com](http://www.eldondevida.com)

**Donate Life America**  
[www.donatelife.net](http://www.donatelife.net)  
[www.donevida.com](http://www.donevida.com)

**United Network for  
Organ Sharing**  
[www.unos.org](http://www.unos.org)

**U.S. Department of Health and Human  
Services**  
[www.organdonor.gov](http://www.organdonor.gov)

## TISSUE DONATION

**Northwest Tissue Services**  
Serving WA, MT, North ID  
921 Terry Avenue  
Seattle, WA 98104  
(800) 858-2282  
[www.psb.org/programs/tissue.htm](http://www.psb.org/programs/tissue.htm)

**SightLife (formerly known as  
Northwest Lions Eye Bank)**  
Serving WA, MT and North ID  
907 Boren Avenue  
Suite 810  
Seattle, WA 98104  
(800) 847-5786  
[www.sightlife.org](http://www.sightlife.org)

**Life Alaska Donor Services**  
Serving AK  
235 E 8th Avenue Suite 100  
Anchorage, AK 99501-3656  
(800) 719-5433  
[www.lifealaska.org](http://www.lifealaska.org)

## BLOOD DONATION

**Puget Sound Blood Center**  
Serving Western WA  
921 Terry Avenue  
Seattle, WA 98104  
(206) 292-6500  
[www.psb.org](http://www.psb.org)

**Inland Northwest Blood Center**  
Serving Eastern WA & North ID  
210 West Cataldo Ave.  
Spokane, WA 99201  
(800) 423-0151  
[www.inbc2.org](http://www.inbc2.org)

**United Blood Services**  
Serving MT  
1444 Grand Ave.  
Billings, MT 59102  
(406) 248-9168  
[www.unitedbloodservices.org/](http://www.unitedbloodservices.org/)

**Blood Bank of Alaska**  
Serving AK  
4000 Laurel St.  
Anchorage, AK 99508  
(907) 456-5645  
[www.bloodbankofalaska.org](http://www.bloodbankofalaska.org)

**American Red Cross Blood Services**  
(800) GIVE-LIFE  
[www.redcross.org](http://www.redcross.org)

## WHOLE BODY DONATION

**University of Washington Willed Body  
Program**  
Serving WA  
Department of Biological Structure  
PO Box 357420  
Seattle, WA 98195  
(206) 543-1860  
<http://wbp.biostr.washington.edu/>

**Montana State University - Bozeman**  
Serving MT  
308 Leon Johnson Hall  
PO Box 173080  
Bozeman, MT 59717  
(406) 994-6516  
[www.montana.edu/wwwwami/bodydonate.html](http://www.montana.edu/wwwwami/bodydonate.html)

**Idaho State University - Anatomical  
Donations**  
Serving ID  
Department of Biological Sciences  
650 Memorial Drive  
Pocatello, ID 83208-8007  
(208) 282-4379  
[www.isu.edu/bios/anatdon.shtml](http://www.isu.edu/bios/anatdon.shtml)

**University of Idaho - WWAMI  
Body Donation Program**  
Serving Eastern WA & Northern ID  
P.O. Box 643510  
Pullman, WA 99164-3510  
(509) 335-2602  
[www.wsu.edu/~wwami/body\\_donor/index.htm](http://www.wsu.edu/~wwami/body_donor/index.htm)

**Science Care Anatomical, Inc.**  
Serving AK  
20100 E. 32nd Pkwy, Ste. 125  
Aurora, CO 80011-8175  
(866) 887-0900  
[www.sciencecare.com/](http://www.sciencecare.com/)

# Online Resources

## Local Resources

### **Living Legacy Registry**

[www.donatelifetoday.com](http://www.donatelifetoday.com)

Provides the opportunity for Washington and Montana Residents to register their wish to be organ and tissue donors.

### **Yes Idaho Registry**

[www.yesidaho.org](http://www.yesidaho.org)

Provides Idaho Residents the opportunity to register their wish to be organ and tissue donors.

### **Alaska Donor Registry**

[www.alaskadonorregistry.org](http://www.alaskadonorregistry.org)

Provides Alaskans the opportunity to register their wish to be organ and tissue donors.

## National Resources

### **Association of Organ Procurement Organizations (AOPO)**

[www.aopo.org](http://www.aopo.org)

Provides information on OPOs and the role they play in the donation and transplant process.

### **Decision: Donation**

[www.organdonor.gov/student/](http://www.organdonor.gov/student/)

Supplemental lesson plans and student activities available online and/or mailed at no charge. The program was provided to the U.S. Department of Health and Human Services by the efforts of several organ procurement organizations.

### **Donate Life America**

[www.donatelife.net](http://www.donatelife.net)

National organization dedicated to educating the public about organ and tissue donation. Provides general information about organ and tissue donation in both English and Spanish.

### **Gift of a Lifetime**

[www.organtransplants.org](http://www.organtransplants.org)

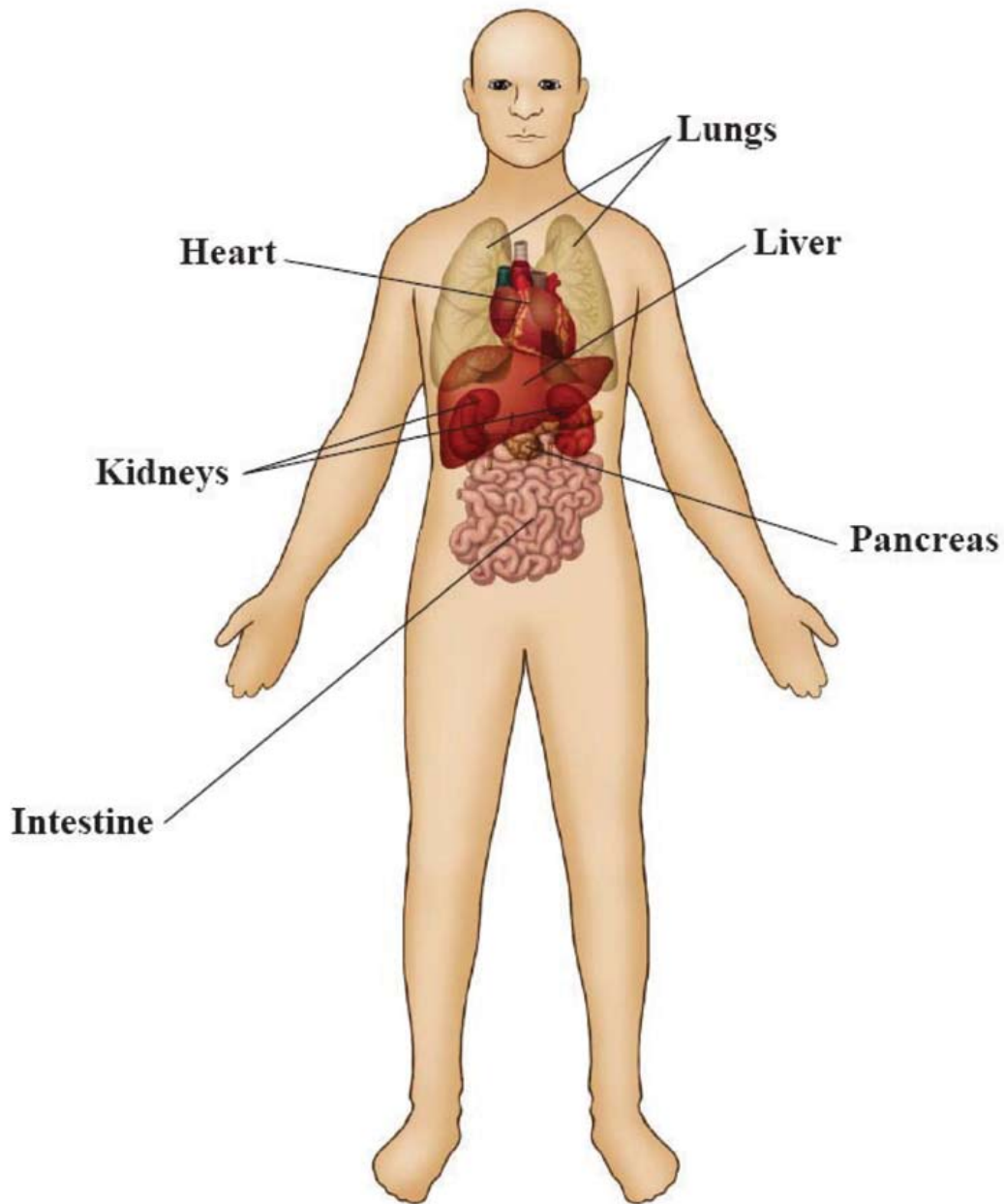
Online curriculum including an interactive journey of transplantation with real life stories of donation and transplantation. Also includes interactive education on specific organs and tissues.

### **United Network for Organ Sharing (UNOS)**

[www.unos.org](http://www.unos.org)

UNOS manages the National Transplant Waiting List, and this site provides information and data concerning many aspects of donation and transplant. It is also linked with a partner site, that of the Organ Procurement Transplant Network (OPTN), which calculates all the donation and transplant statistics.

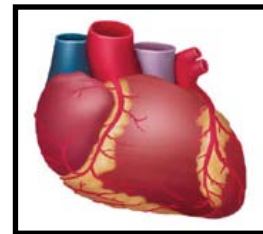
# Transplantable Organs



## Organ Information

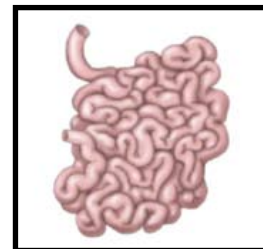
### Heart

- Hearts can be preserved for 4-6 hours before transplant.
- Some conditions that could make a transplant necessary are cardiomyopathy, heart failure, myocarditis, and heart disease.



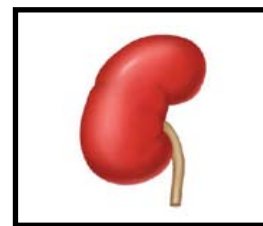
### Intestine

- Most intestinal transplants are performed on infants and children.
- Some conditions that could make a transplant necessary are twisted or blocked intestines or short-gut syndrome.
- The Northwest developed its first intestine transplant program in 2004.
- Intestines can be preserved for 8-16 hours.



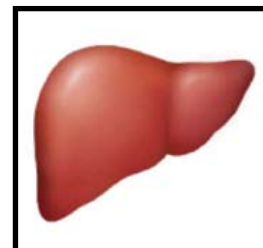
### Kidney

- While waiting for a kidney transplant, many patients undergo dialysis, to clean toxins out of blood.
- Some conditions that could make a kidney transplant necessary are high blood pressure, diabetes and cystic kidney disease.
- The most commonly transplanted organ & most in need.
- Extensive cross-matching is possible because of a preservation time up to 36 hours. This allows the best possible genetic matching during allocation.



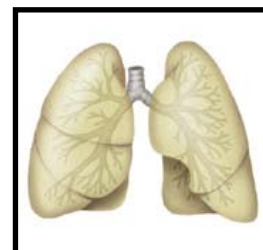
### Liver

- A donated liver can sometimes be split between two recipients, so one donor can be the source of two liver transplants.
- Some conditions that could necessitate a liver transplant are birth defects of the liver or bile duct, chronic liver infections like Hepatitis or drug and alcohol damage.
- Livers have a preservation time of 4-16 hours; they are blood typed and matched for size and weight of donor.



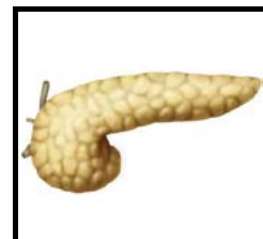
### Lung

- A single lung can save a life. One donor can be the source of two lung transplants.
- Some conditions that could necessitate a lung transplant are cystic fibrosis, pulmonary hypertension, emphysema and pulmonary edema.
- Lungs have a preservation time of 4-6 hours; they are blood typed and matched for size and weight of donor.

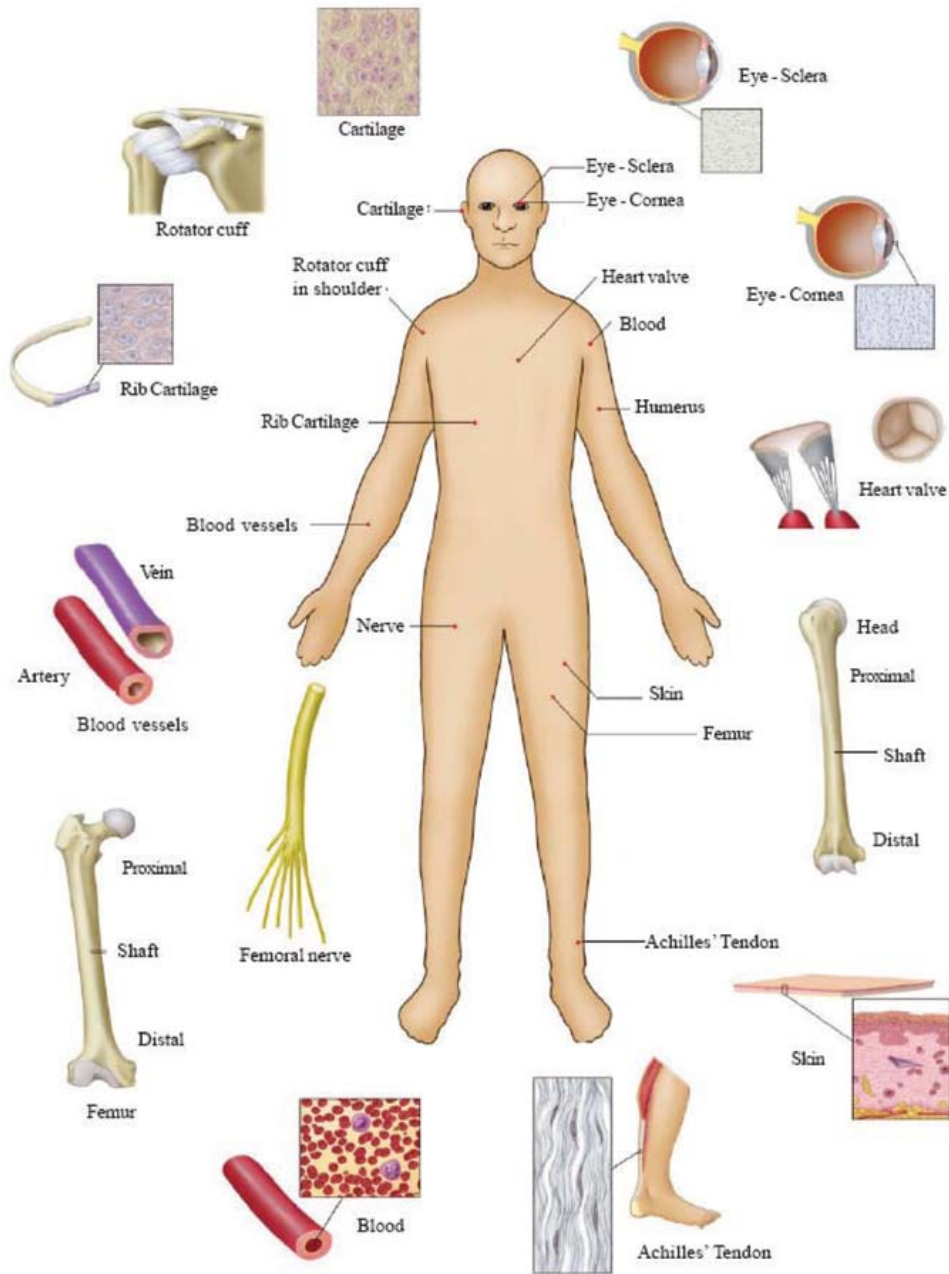


### Pancreas

- The pancreas controls the level of glucose in the blood. It is often transplanted with a kidney, because diabetes affects both organs.
- Conditions that might necessitate a pancreas transplant are diabetes or pancreas failure.
- The pancreas can be preserved for 2-14 hours before transplant.



# Transplantable Tissues



## Tissue Information

Donor Tissue	Transplanted Tissue	Applications	Benefits to Recipients
<b>Eye</b>	Sclera	• Repair eyelid, reinforce wall of eye. Also used to repair ruptured ear drums	Maintain structure; restores hearing
	Cornea	• Replace diseased or damaged cornea	Prevents blindness; restores vision
<b>Musculoskeletal</b>	Bone	• Whole segment replacement, hip resection, spinal fusion, dental procedures	Avoid amputation, promote healing, maintain mobility, structure
	Tendons	• Replace damaged tissue	Restore mobility, independence
	Ligaments	• Replace damaged rotator cuff; used for bladder suspension	Restores independence in activities of daily living
	Cartilage	• Repairs congenital and traumatic facial deformity	Restores normal facial appearance
<b>Cardiovascular</b>	Heart Valves	• Replace damaged, diseased valves	No continuing medication, allow children to grow into graft, no calcification
	Blood Vessels	• Bypass surgeries • Replace blocked or clogged veins below knee	Avoid secondary surgical site, amputation; restore circulation due to clogged veins and arteries
<b>Other Tissue</b>	Skin	• Burn wound protection	Prevent infection, dehydration
	Collagen	• Reconstruction, bladder slings, vocal cord injections	Repair defects, scarring
	Nerve	• Neurosurgery in wrist	Restores feeling and function of hand

# Review Worksheet Answer Guide

## Multiple Choice

**1. How can you make sure your decision about organ and tissue donation is known?**

- a. Register your wish online
- b. Say YES to donation when you get your driver's license
- c. Fill out and return a registry brochure
- d. All of the above

**Answer: D, All of the above.**

**2. The recipient of an organ is determined according to:**

- a. Blood and tissue type, body size, length of time on waiting list, medical urgency
- b. Race
- c. How famous you are

**Answer: A, Blood & tissue type, body size, length of time on waiting list, medical urgency.**

- The LifeCenter Northwest coordinator matches organs to recipients using the National Transplant Waiting List.
- Strict federal guidelines ensure ethical and fair distribution, so there is no way to cut in line based on wealth, fame or any other non-medical factor.

## True/False

**1. Organ transplants save lives.**

True      False

**Answer: True**

- Transplant recipients receive a second chance at life. Most live many years as a result of the generosity of those who choose to become organ donors.

**2. If I'm in an accident, doctors will still work hard to save my life even though I am a registered donor.**

True      False

**Answer: True**

- The doctors who work to save your life are different than those involved in organ recovery and transplantation.
- Only after death has been declared will organ donation be considered.

**3. Americans overwhelmingly support organ and tissue donation.**

True      False

**Answer: True**

- Polls indicate that over 90% of Americans are in favor of organ donation.

## Recommended Lesson Plan

- 1. Living Legacy Foundation Guest Speaker** 15 minutes
  - An opportunity to hear from someone affected by organ/tissue donation, i.e. heart transplant recipient, donor family member.
  - Please contact Living Legacy Foundation to arrange a Youth Education speaker.
- 2. “It’s Your Choice...Donate Life” Video** 15 minutes
  - Video provided by Living Legacy Foundation
- 3. Question/Answer Session** 5 minutes
  - Typical questions are provided in this guide
- 4. Review Registry Brochure** 5 minutes
  - Materials provided by Living Legacy Foundation

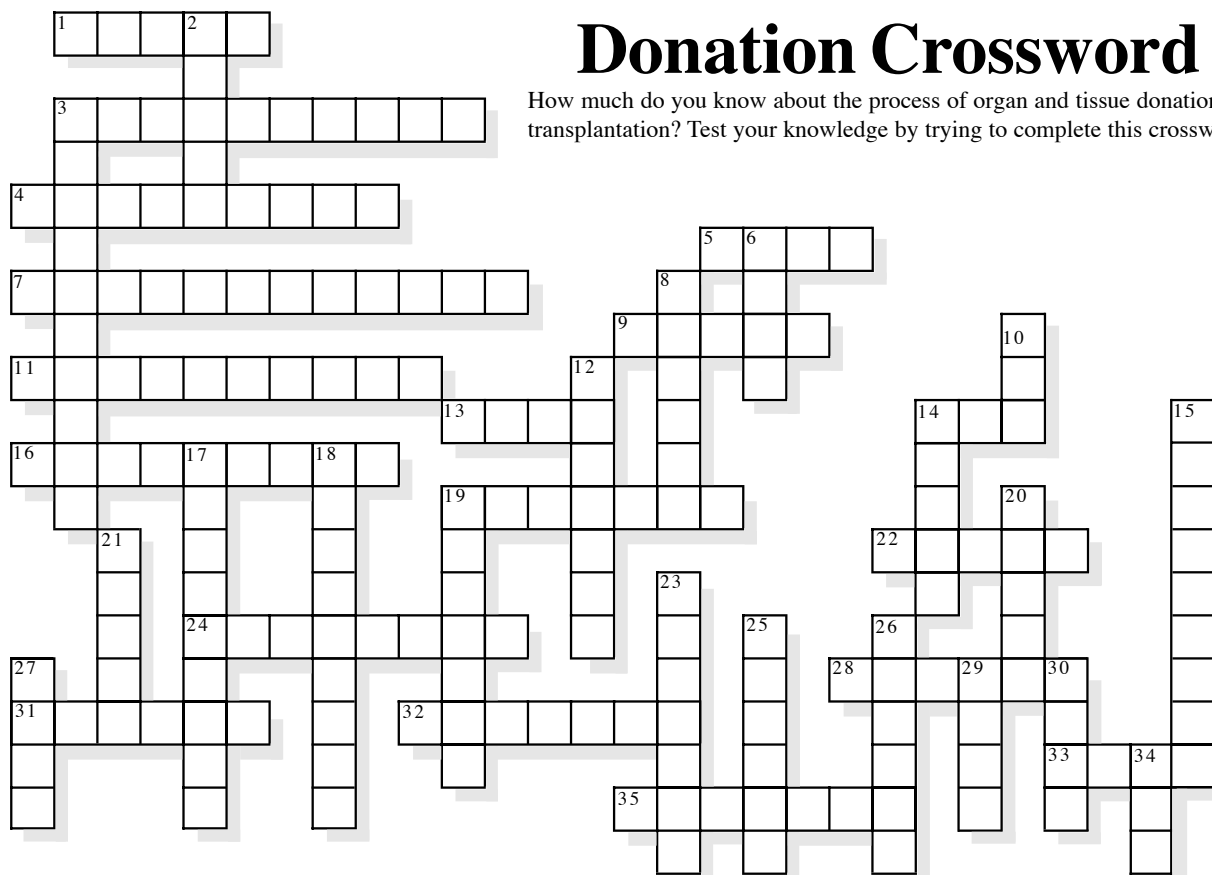
## Supplemental Lesson Plans

- 1. Crossword Puzzle** 5 minutes
  - Included in guide; provided by Decision: Donation; permission granted to make copies.
- 2. Online Student Research** 15 minutes
  - We recommend utilizing 2 national websites:
    - [www.organdonor.gov/student/](http://www.organdonor.gov/student/)
    - [www.organtransplants.org](http://www.organtransplants.org)
  - You will find online curriculum and student activities on each website
  - With online lesson plans, you may have students:
    - Research a specific organ that can be donated
    - Examine organ and tissues that can be donated
    - Watch online stories of organ and tissue recipients
    - Complete online crossword puzzles

## Crossword Puzzle

# Donation Crossword

How much do you know about the process of organ and tissue donation and transplantation? Test your knowledge by trying to complete this crossword.



### Across

1. Transplantable structure that controls direction of blood flow in the heart
3. Condition in which the brain no longer functions (2 words)
4. Long, narrow tubular part of the digestive tract
5. Organ whose function is gas exchange
7. System that protects the body against disease, and as a result, may cause rejection (2 words)
9. Individual who provides organs for others
11. To transfer an organ from one person to another
13. Main tissue that forms the skeleton
14. We have \_\_\_\_\_ lungs
16. Card that indicates your desire to become a donor
19. \_\_\_\_\_ death occurs when there is an absence of heartbeat with no chance of resuscitation
22. Large organ that, in addition to other functions, removes poisons from the blood
24. Organ that secretes a hormone that controls blood sugar level
28. Skin \_\_\_\_\_ are used to replace the skin of burn victims
31. Organ that produces urine
32. Arteries and veins are examples of blood \_\_\_\_\_
33. Organ and tissue donation is a gift of \_\_\_\_\_
35. Hormone that controls blood sugar level

### Down

2. These carry blood toward the heart
3. Tissue found inside some bones and is important in the production of blood cells (2 words)
6. United Network for Organ Sharing (Abbrev)
8. Transplantable outer layer of the eyeball
10. Organ Procurement Organization (Abbrev)
12. These connect muscle to bone
14. Transplantable long bone in the lower leg
15. Soft tissue that makes up part of the skeleton; also found in the nose and ears
17. Someone who receives an organ or tissue
18. Process by which the body's immune system recognizes and destroys transplanted organs or tissues
19. Another name for a dead body
20. Organ that pumps blood
21. Tissue that carries nutrients, oxygen, and waste products
23. What family is asked for before organs are removed from the body of a deceased loved one
25. Group of similar cells performing the same function
26. The heart, the brain, and the liver are examples of \_\_\_\_\_
27. Tissue that covers the body
29. Number of chambers in the human heart
30. It is illegal to \_\_\_\_\_ organs
34. Fibrous tissue that covers muscles

